

Heavy

BASALT S3

Robust, full-leather and waterproof safety boot for tough working conditions

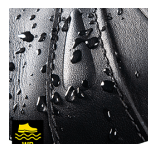
Upper	Waterproof Pull-up Leather
Lining	Membrane, 3D-Mesh
Footbed	SJ foam footbed
Midsole	Anti-puncture Textile
Outsole	PU/Rubber
Toecap	Composite
Safety standard	S3 / ESD, SRC, WR
Size range	EU 36-47 / UK 3.5-12.0 US 4.0-13.0 / CM 23.5-31.0
Sample weight	0.785 kg
Norms	EN ISO 20345:2011 ASTM F2413:2018



BLK

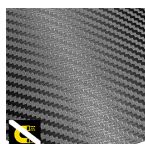


DBN



Waterproof (WR)

Waterproof footwear prevents liquids to enter into the shoe.



Metal free

Metal free safety shoes are in general lighter than regular safety shoes. They are also very beneficial for professionals who have to pass through metal detectors several times a day.



S3

S3 safety shoes are suitable for work in an environment with high humidity and presence of oil or hydrocarbons. These shoes also protect against perforation risk of the sole, and foot crushing.



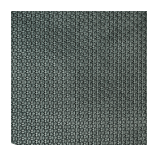
SRC slip resistance

Slip resistant soles are one of the most important features of safety and occupational footwear. SRC slip resistant soles pass both SRA and SRB slip resistant tests, they are tested on both steel and ceramic surfaces.



Electrostatic Discharge (ESD)

ESD provides the controlled discharge of electrostatic energy that can damage electronic components and avoids risks of ignition resulting from electrostatic charges. Volume resistance between 100 KiloOhm and 100 MegaOhm.



Rubber outsole

Rubber outsoles provide versatile functions that make them suitable for many areas of application: excellent cut resistance, heat and cold resistance, high flexibility at cold temperatures, resistance against oil, fuel and many chemicals.

Industries:

Automotive, Chemical, Cleaning, Construction, Logistics, Mining, Oil & Gas, Industry

Environments:

Dry environment, Wet environment, Muddy environment, Uneven surfaces, Extreme slippery surfaces

Maintenance instructions:

To extend the life of your shoes, we recommend to clean them regularly and to protect them with adequate products. Do not dry your shoes on a radiator, nor nearby a heat source.

	Description	Measure unit	Result	EN ISO 20345
Upper	Waterproof Pull-up Leather			
	Upper: permeability to water vapor	mg/cm²/h	1.1	≥ 0.8
	Upper: water vapor coefficient	mg/cm²	23	≥ 15
Lining	Membrane, 3D-Mesh			
	Lining: permeability to water vapor	mg/cm²/h	2.4	≥ 2
	Lining: water vapor coefficient	mg/cm²	23	≥ 20
Footbed	SJ foam footbed			
	Footbed: abrasion resistance	cycles	25600/12800	≥ 400
Outsole	PU/Rubber			
	Outsole abrasion resistance (volume loss)	mm³	25	≤ 150
	Outsole slip resistance SRA: heel	friction	0.4	≥ 0.28
	Outsole slip resistance SRA: flat	friction	0.38	≥ 0.32
	Outsole slip resistance SRB: heel	friction	0.16	≥ 0.13
	Outsole slip resistance SRB: flat	friction	0.20	≥ 0.18
	Antistatic value	MegaOhm	NA	0.1 - 1000
	ESD value	MegaOhm	77	0.1 - 100
	Heel energy absorption	J	37	≥ 20
Toecap	Composite			
	Impact resistance toecap (clearance after impact 100J)	mm	NA	NA
	Compression resistance toecap (clearance after compression 10kN)	mm	NA	NA
	Impact resistance toecap (clearance after impact 200J)	mm	16.0	≥ 14
	Compression resistance toecap (clearance after compression 15kN)	mm	19.0	≥ 14

Sample size: 42

Our shoes are constantly evolving, the technical data above may change. All product names and brand Safety Jogger, are registered and may not be used or reproduced in any format, without written consent from us.



Solutions for every workplace

INDUSTRIAL PROFESSIONAL TACTICAL TIGER GRIP

ENGINEERED
IN EUROPE

www.safetyjogger.com